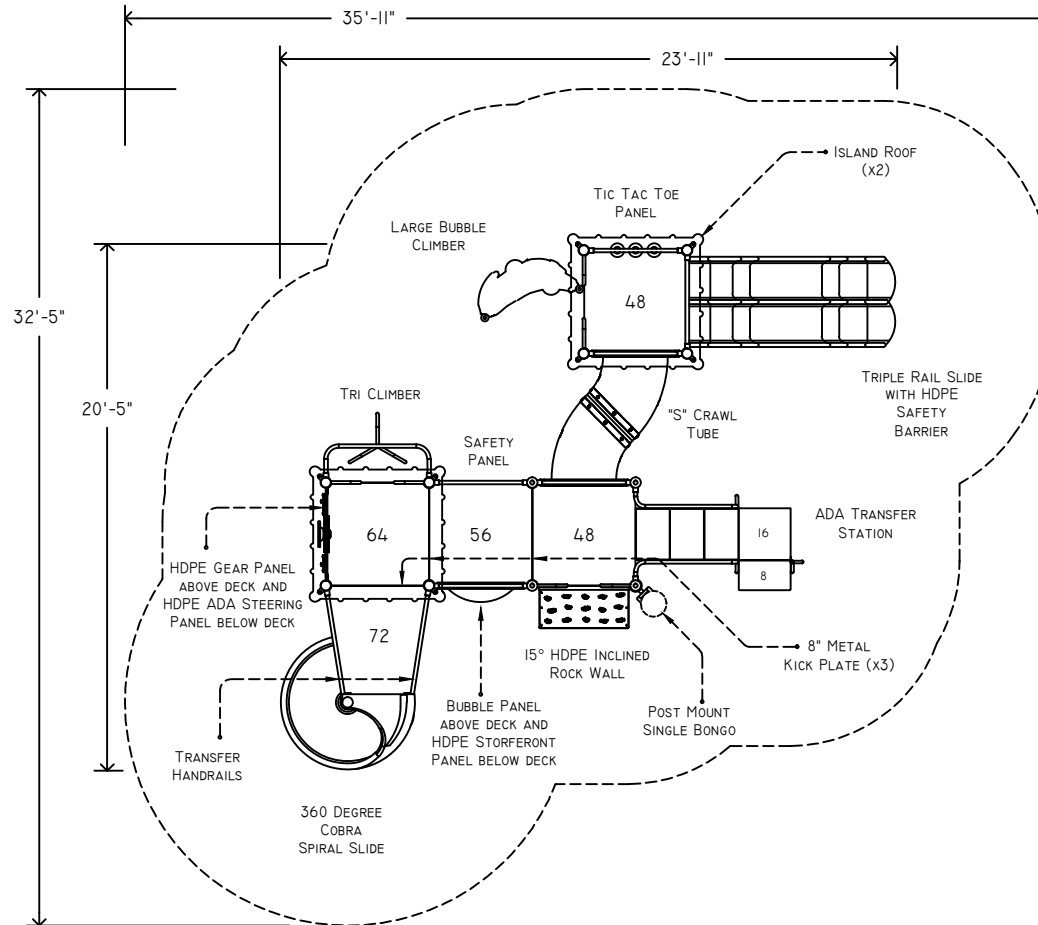


AN ENERGY ABSORBING PROTECTIVE SURFACE MATERIAL IS REQUIRED UNDER AND AROUND THIS PLAY STRUCTURE

FINAL REVISIONS				
BY:	REV:	DESCRIPTION	DATE:	APPROVED:
GW	B	REPLACE PMSW WITH PM BONGO	04-14-16	JENN.C



ADVENTURE PLAYGROUND SYSTEMS, INC.	APS118ADA-02 PLAY STRUCTURE	ADA COMPLIANCE	DATE: 09-05-15	DRAWING BY: J.O
	ELEVATED COMPONENTS: 8 GROUND LEVEL COMPONENTS: 3 AGE GROUP: 2 TO 12	MIN "FALL ZONE": 32'5" x 35'11" MAX FALL HEIGHT: 72" APPROX. WEIGHT LIMIT : N/A APPROX. SQ FT: 845' APPROX. PERIM: 109'3" (LINEAR FT)	DRAWING NO: A001	REVISION NO: A/000
N/A	TO PROMOTE PROPER USAGE BY CHILDREN, A SAFETY SIGN IS RECOMMENDED AT EACH MAIN ENTRY POINT OF THE PLAY STRUCTURE. THIS IS TO INFORM CAREGIVERS THE APPROPRIATE AGE LEVEL AND RULES FOR THIS EQUIPMENT.			